



## 特点

- \* 高效率、高功率密度
- \* 2:1 电压输入范围
- \* 固定开关频率
- \* 六面金属封装

## Features

- \* High Efficiency, High Power Density
- \* 2: 1 Input Voltage Range
- \* Constant Frequency
- \* Encapsulated in Metal Cases

输入特性 (Input)		注释 (Notes and Conditions)	
输入电压范围 (Input Voltage Range)			
标称 (Nominal)	24Vdc	18~36Vdc	40Vdc Max
标称 (Nominal)	48Vdc	36~72Vdc	80Vdc Max
输入欠压保护 (Input Undervoltage Protection)		< V <sub>imin</sub>	
遥控功能 (Remote On/Off Function)			
正逻辑 (Positive Logic)	开启 (On)	高电平或悬空 (High Level or Open Circuit)	相对于 -Vin (Reference to -Vin)
	关闭 (Off)	零电平或短路 (Connect to -Vin)	

输出特性 (Output)		注释 (Notes and Conditions)	
输出电压精度 (Voltage Set-Point Accuracy)			
		± 1%	V <sub>inom</sub> and I <sub>onom</sub>
输出电压调节范围 (Voltage Trim Range)			
		± 10%	
源效应 (Line Regulation) <sup>1</sup>			
		± 0.5%V <sub>o</sub>	V <sub>imin</sub> ~V <sub>imax</sub> , I <sub>onom</sub>
负载效应 (Load Regulation) <sup>1</sup>			
		± 1.0%V <sub>o</sub>	10%~100%I <sub>onom</sub> , V <sub>inom</sub>
输出过压保护 (Output Overvoltage Protection)			
		120%~140%V <sub>o</sub>	
输出过流保护点 (Current Limit Threshold Range)			
		110%~140%I <sub>o</sub>	
短路保护 (Short-Circuit Protection)			
		连续可恢复 (Continuous, Automatic Recovery)	
瞬态响应 (Dynamic Response)			
过冲幅度 (Peak Deviation)		± 5%V <sub>o</sub>	25%-50%-25% of I <sub>onom</sub>
恢复时间 (Settling Time)		200 μs	and 50%-75%-50% of I <sub>onom</sub>

一般特性 (General)		注释 (Notes and Conditions)	
温度系数 (Temperature Coefficient)			
		± 0.02%/°C	
隔离电压 (Isolation Voltage)			
输入与输出 (Input-Output)		1000Vdc 1min	
输入与外壳 (Input-Case) <sup>2</sup>		500Vdc 1min	
输出与外壳 (Output-Case) <sup>2</sup>		500Vdc 1min	
工作壳温 (Operating Case Temperature)			
		-25°C ~ +85°C	
贮存温度 (Storage Temperature)			
		-40°C ~ +125°C	
冷却方式 (Cooling)			
		自然冷却 (Natural Convection)	
平均故障间隔时间 (MTBF)		2 × 10 <sup>5</sup> h	MIL-HDBK-217

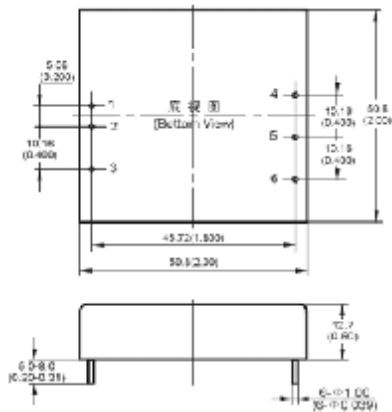
注 (Notes):

- 1 对 SR48S3V3-13W、SR48S5-20W 源效应 (line Regulation): + 0.2%V<sub>o</sub>; 负载效应 (Load Regulation): + 0.5%V<sub>o</sub>
- 2 对 SR48S3V3-13W、SR48S5-20W 隔离电压为 (Isolation Voltage): 1000Vdc 1min

## 型号列表 (Models)

产品型号 (Model Number)	标称输入电压 (Input Voltage) Vdc	标称输出电压 (Output Voltage) Vdc	标称负载 (Output Current) A	额定输出功率 (Output Power) W	效率 (Efficiency) %	输出杂音电压峰峰值 (Ripple and Noise) mVp-p	外形引脚 (Outline Mark)
SR48S3V3-13W	48	3.3	4	13	84	50	B-S
SR48S5-20W	48	5.0	4	20	88	75	B-S
SR48S2V5-25W	48	2.5	10	25	82	75	A-S
SR48S3V3-33W	48	3.3	10	33	85	75	A-S
SR48S5-40W	48	5.0	8	40	89	75	A-S
SR24S3V3-33W	24	3.3	10	33	85	75	A-S
SR24S5-40W	24	5.0	8	40	87	75	A-S

## A-S 安装尺寸 (Mechanical Drawing)

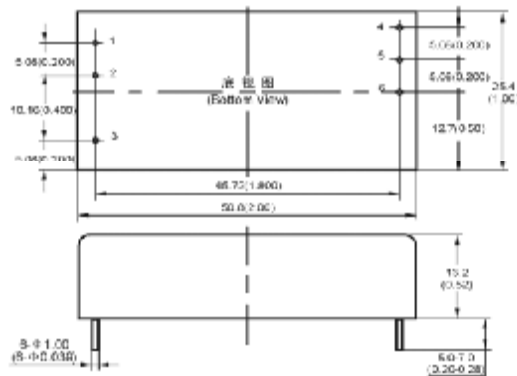


尺寸单位是 mm(inches); All Dimensions in mm (inches)

### 引脚定义 (Pin Definition)

引脚(Pin)	单路(Single)
1	+Vin
2	-Vin
3	Rem
4	+Vout
5	-Vout
6	Trim

## B-S 安装尺寸 (Mechanical Drawing)



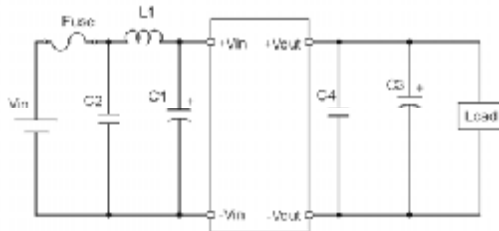
### 引脚定义 (Pin Definition)

引脚(Pin)	单路(Single)
1	+Vin
2	-Vin
3	Rem
4	+Vout
5	-Vout
6	Trim

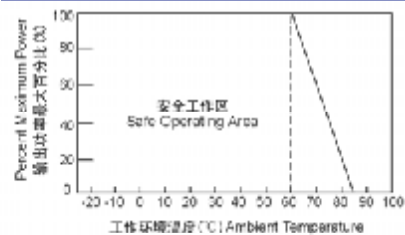
### 未注公差按下表

(Tolerances Unless Otherwise Specified)	
mm	inches
.x ±0.5	.xx ±0.02
.xx ±0.13	.xxx ±0.005

## 应用电路推荐 (Recommended Application Circuit)



## 温度降额曲线 (Temperature Derating Curve)



注: 除非另有说明, 指标一般在标称输入电压、满载和 25°C 环境温度下测得。

Note: All specifications are typical at nominal input, full load at 25°C unless otherwise stated.