



## 特点

- \* 外形尺寸: 61.0 × 57.9 × 12.7 mm
- \* 标准半砖封装和引脚
- \* 高效率、经济型
- \* 六面金属封装

## Features

- \* Size: 2.40 × 2.28 × 0.50 inch
- \* Standard Half-brick Package and Footprint
- \* High Efficiency ,Low Cost Design
- \* Encapsulated in Metal Cases

输入特性(Input)		注释(Notes and Conditions)	
输入电压范围(Input Voltage Range)			
标称(Nominal)	48Vdc	36~72Vdc	80Vdc Max
标称(Nominal)	24Vdc	18~36Vdc	45Vdc Max
遥控功能(Remote On/Off Function)			
1) 正逻辑(Positive Logic)	开启(On)	高电平或悬空 (High Level or Open Circuit)	相对于 -Vin(Reference to -Vin)
	关闭(Off)	零电平或短路 (Connect to -Vin)	
2) 负逻辑(Negative Logic)	开启(On)	零电平或短路 (Connect to -Vin)	相对于 -Vin(Reference to -Vin)
	关闭(Off)	高电平或悬空 (High Level or Open Circuit)	型号中带“-L” (Model Number with “-L”)

输出特性(Output)		注释(Notes and Conditions)	
输出电压精度(Voltage Set-Point Accuracy)	± 1%	Vinom and Ionom	
输出电压调节范围(Voltage Trim Range)	± 10%		
源效应(Line Regulation)	± 0.5%Vo	Vimin~Vimax, Ionom	
负载效应(Load Regulation)	± 1%Vo	10%~100%Ionom, Vinom	
输出过压保护(Output Overvoltage Protectiem)	115%~140%	Self Recovering	
输出过流保护点(Current Limit Threshold Range)	≥ 110%Io		
短路保护(Short-Circuit Protection)	连续可恢复(Continuous ,Automatic Recovery)		
瞬态响应(Dynamic Response)			
过冲幅度(Peak Deviation)	± 5%Vo	25%-50%-25% of Ionom	
恢复时间(Settling Time)	200 μ s	and 50%-75%-50% of Ionom	

一般特性(General)		注释(Notes and Conditions)	
温度系数(Temperature Coefficient)	± 0.02%/℃		
隔离电压(Isolation Voltage)			
输入与输出(Input-Output)	1000Vdc 1min		
输入与外壳(Input-Case)	700Vdc 1min		
输出与外壳(Output-Case)	700Vdc 1min		
绝缘电阻(Isolation Resistance)	≥ 50M Ω		
工作壳温(Operating Case Temperature)	- 25℃~ + 85℃		
贮存温度(Storage Temperature)	- 40℃~ + 125℃		
冷却方式(Cooling)	自然冷却(Natural Convection)		
平均故障间隔时间(MTBF)	2 × 10 <sup>5</sup> h	MIL-HDBK-217	
重量(Weight)	110g		

注: 除非另有说明, 指标一般在标称输入电压、满载和 25℃ 环境温度下测得。

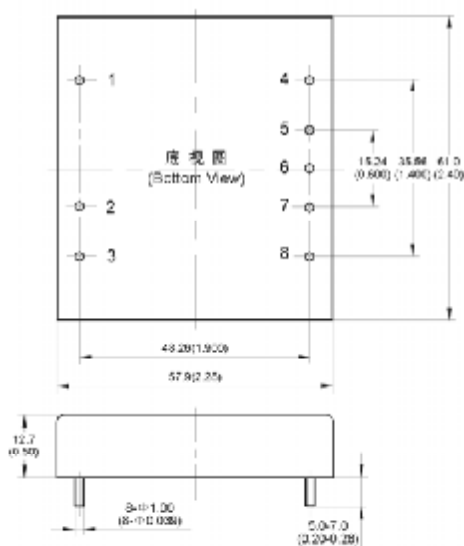
Note: All specifications are typical at nominal input ,full load at 25℃ unless otherwise stated.

## 型号列表 (Models)

产品型号 (Model Number)	标称输入电压 (Input Voltage) Vdc	标称输出电压 (Output Voltage) Vdc	标称负载 (Output Current) A	额定输出功率 (Output Power) W	效率 (Efficiency) %	输出杂音电压峰峰值 (Ripple and Noise) mVp-p
HC-05020SC	48	20.00	2.5	50	88	150
HC-0501SC	48	5.00	10	50	88	150
HC-05004SC	48	4.00	12.5	50	85	150
HC-050ASC	48	3.30	12	39.6	85	150
HC-050BSC	48	2.50	12	30	81	150
HC-L0501SC	48	5.00	10	50	88	150
HC-L050ASC	48	3.30	12	39.6	85	150
HC-L050BSC	48	2.50	12	30	81	150
HC-0501SB	24	5.00	10	50	88	150
HC-L0501SB	24	5.00	10	50	88	150

## 安装尺寸 (Mechanical Drawing)

尺寸单位是 mm(inches); All Dimensions in mm (inches)



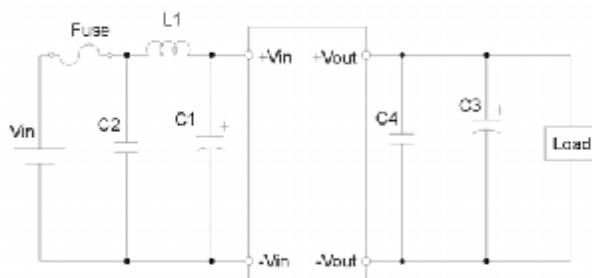
### 引脚定义 (Pin Definition)

引脚 (Pin)	单路 (Single)
1	-Vin
2	Rem
3	+Vin
4	-Vout
5	-S
6	Trim
7	+S
8	+Vout

### 未注公差按下表

(Tolerances Unless Otherwise Specified)	
mm	inches
.x ±0.5	.xx ±0.02
.xx ±0.13	.xxx ±0.005

## 应用电路推荐 (Recommended Application Circuit)



## 温度降额曲线 (Temperature Derating Curve)

